

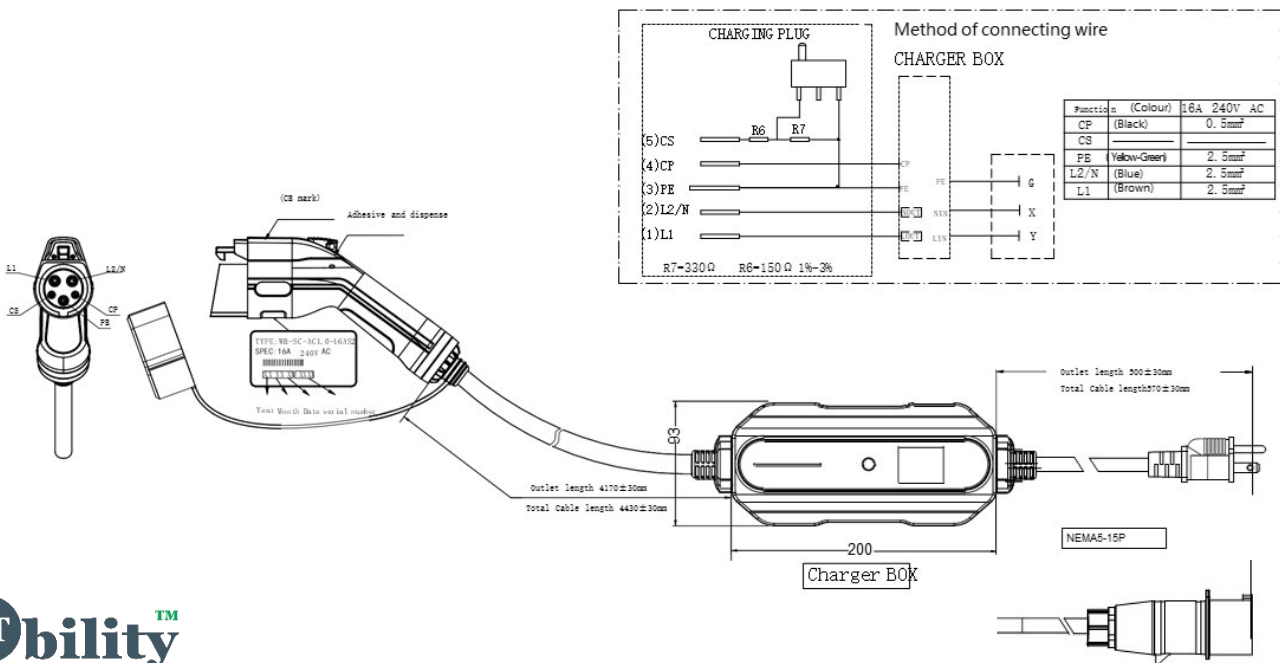
DATA-SHEET



JT Mobility Type 1 SAE J1772 Smart portable chargers allow you to charge on the go from all types of sockets, from the usual socket to the industrial CEE-32A. It has the new generation practical display that shows the charging current, voltage at each phase, power, and temperature. All JT Mobility portable chargers allow you to set the charging current according to the circuit breaker and ensure that the circuit breaker will not trip during charging. All portable chargers are equipped with protective elements to ensure the complete safety of the car and the charger. Portable Mode 2 charging cable for connection EV to an ordinary domestic socket. Drivers can charge electric cars from a domestic socket in an emergency. Communication between vehicle and charging port is provided via a box connected between the vehicle plug and connector plug called ICCB (In-Cable Control Box).

KEY FEATURES

- moulded Plug with Temperature Sensor
- IP 66 Rated
- Non-Flammable Strong Polyamide Material, More Environmentally Friendly and Halogen Free
- Recognition of Dangerous Voltage on the Protective Conductor
- Protective Conductor Monitoring (PCM)
- Power Failure Monitoring
- Thermal Monitoring
- Integrated Vehicle Communication Module (PWM)



PORTABLE ELECTRIC CAR CHARGER TYPE 1 SAE J1772 SINGLE PHASE

SPECIFICATIONS		
Part Code	JTCCM2T1CE1P1A05-2	JTCCM2T2NE1P1A05-1
Standard	SAE J1772 Type 1	SAE J1772 Type 1
Plug Type	Type-1 Female	Type-1 Female
Used at	Vehicle Side	Vehicle Side
No Of Phase	Single	Single
Rated Current	32A	16A
Operation Voltage	100-250V	100-250V
Insulation Resistance	>1000MΩ(DC500V)	>1000MΩ(DC500V)
Contact Resistance	0.5 megohm MAX	0.5 megohm MAX
Temperature Resistance	<50K	<50K
Operating Temperature	-30C to +65C	-30C to +65C
Impact Insertion Force:	>300N	>300N
Protection Degree	IP55 - Mated	IP55 - Mated
Mating Cycles	>10000	>10000
Contact Pin	Copper Alloy, Silver or Nickel Plating	Copper Alloy, Silver or Nickel Plating
Shell material	Thermoplastic	Thermoplastic
Sealing gasket	Rubber or silicon rubber	Rubber or silicon rubber
Supply Connector	CEE – 32Amp	NEMA – 16Amp
IC-CPD Standard	IEC 62752	IEC 62752
IC-CPD Enclosure Material	ABS	ABS
IC-CPD Rated Current (Max)	32A	16A
IC-CPD Operating Voltage	100-250V	100-250V
IC-CPD LCD Display	YES	YES
IC-CPD Protection Degree	IP 66	IP 66
Overvoltage Protection	YES	YES
Short-circuit Protection	YES	YES
Overcurrent Protection	YES	YES
Flame Retardant Grade	UL94 V-0	UL94 V-0
Cable Nominal Conductor Size (Sq. mm)	3 Core x 6.0 Sq. mm 1 Core x 0.75 Sq. mm	3 Core x 2.5 Sq. mm 1 Core x 0.5 Sq. mm
Approx. Diameter Cable (mm)	15.0 ± 0.50	10.0 ± 0.50
Cable Outer Sheathing	Thermoplastic polyurethane (TPU)	Thermoplastic polyurethane (TPU)
Cable Length	5 Meter	5 Meter